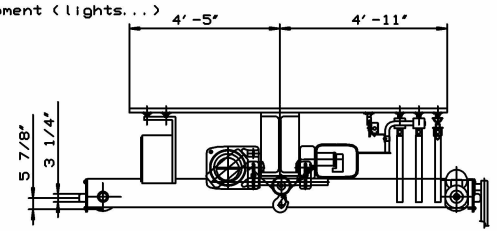
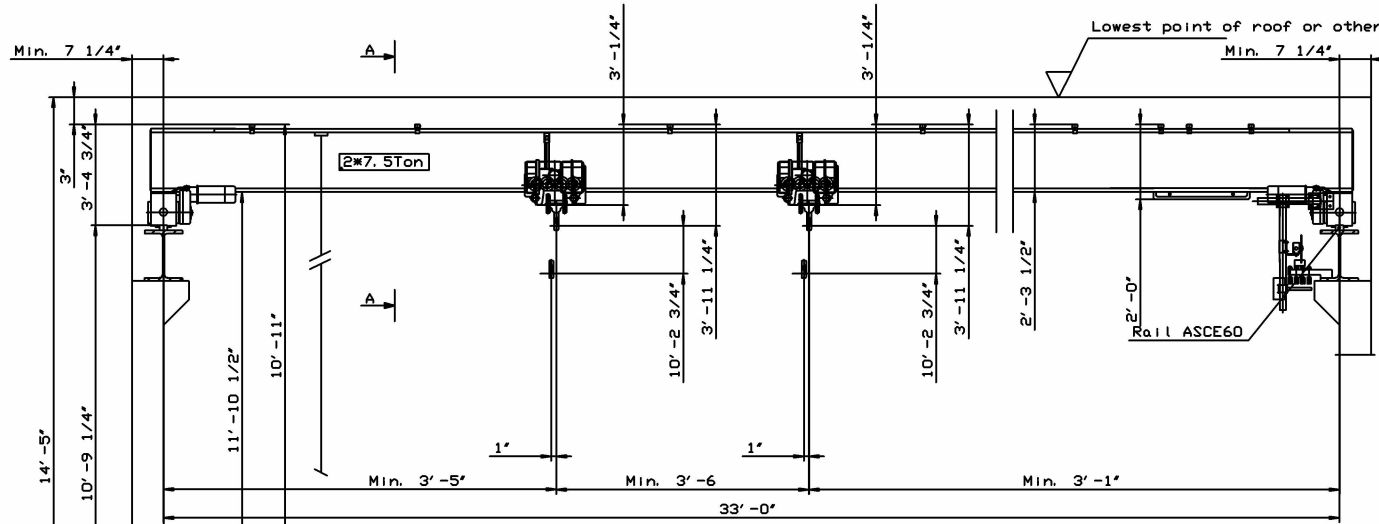


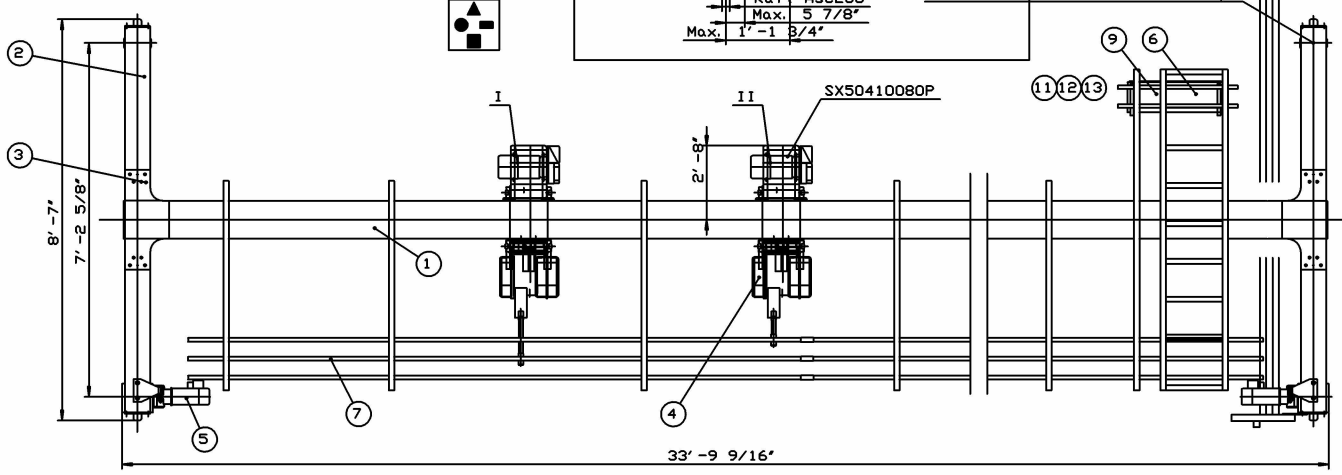
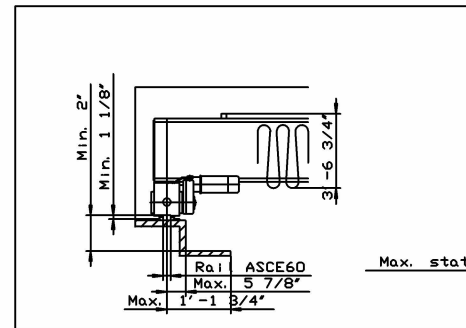
CLSP01B1



A - A

TECHNICAL DATA

LOAD	2*7.5Ton
SPAN	33'-0"
LIFTING HEIGHT	10'-2 3/4"
HOISTING SPEED	20/3.3 ft/min 2-speed
TROLLEY SPEED	65 ft/min Stepless
BRIDGE SPEED	100 ft/min Stepless
WEIGHT OF TROLLEY	2 * 1340 lbs
WEIGHT OF BRIDGE	6690 lbs
POWER SUPPLY	460 V / 115 V / 60 Hz
CRANE GROUP	CHAA C



REMARKS:

DRAWING NOT TO SCALE

- * MAINLINE = *
- * PENDANT = *
- OTHER

APPROVED BY: _____ DATE: _____

CMA/RWD	2/2/2005
R&M MATERIALS HANDLING INC.	(7.5+7.5) QXsk, 33' SPAN
	WC 10615 - REV. 1

DRAWING NDT IN SCALE